

Geotech Data Buoys are marine grade platforms that support both topside and subsurface environmental monitoring sensors including weather stations, wave sensors, and multiparameter sondes. Most of the pre-configured buoys includes semi-flexible solar panels and a data well to accommodate batteries, data loggers, sensors, and telemetry communications.

Constructed of an inner core of cross-linked polyethylene foam with a tough polyurea skin provides unprecedented protection against abrasion and corrosion. The stainless steel frame supports both single and multipoint moorings.

FEATURES

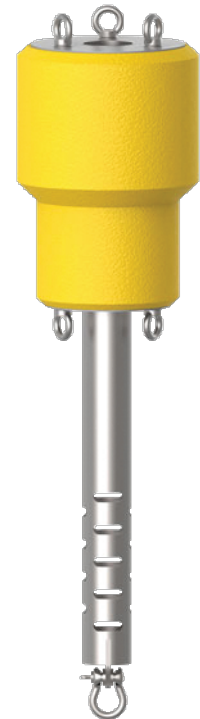
- **Sustainable** – available solar powered data logging and communication buoys
- **Adaptable** – with female NPT threads for instrument deployment pipes and custom sensors
- **Data Driven** – wireless telemetry options; Wi-Fi, radio, or cellular communications
- **Universal** – interfaces with many digital and analog sensor configurations
- **Visible** – optional solar marine yellow light with up to 4 nautical mile range, 15 flashes per minute

SUITABLE DEPLOYMENT APPLICATIONS

- Lakes
- Rivers
- Coastal Waters
- Harbors
- Estuaries
- Freshwater or Marine

Data Buoy 40:

Geotech Data Buoy 40 features a 4 inch slotted stainless steel instrument pipe that securely houses water quality sondes and other instruments that integrate power and data logging. This lightweight platform can be deployed from boat or helicopter – making it an ideal choice for applications where water needs to be monitored at a moment’s notice.



Specifications:

| | |
|-----------------------------------|---|
| Hull Dimensions | 14" (35.56cm) outside diameter; 20" (50.80cm) tall |
| Instrument Pipe Dimensions | 3.87" (9.83cm) inside diameter, 48" (121.92cm) tall |
| Weight | 38 lbs. (17.24 kg) no payload; 45 lbs. (20.41 kg) with sonde and solar marine light |
| Buoyancy | 40 lbs. (18.14 kg) |
| Hull Material | Cross-linked polyethylene foam with polyurea coating & stainless steel deck |
| Tower /Hardware Material | 304 stainless steel |
| Mooring Attachments | 1, 2, or 3 point mooring |

CALL GEOTECH TODAY (800) 833-7958

Geotech Environmental Equipment, Inc.

2650 East 40th Avenue • Denver, Colorado 80205
 (303) 320-4764 • FAX (303) 322-7242
 email: sales@geotechenv.com • website: www.geotechenv.com

Data Buoy 150, 450, 650, 950, 1250:

Geotech Data Buoy 150, 450, 650, 950, and 1250 support both topside and subsurface environmental monitoring sensors including weather stations, wave sensors, thermistor strings, multi-parameter sondes, Doppler current profiles and other monitoring instruments. These platforms are self-sustained with solar panels and optional telemetry systems – making them an ideal choice for applications where environmental monitoring is needed for extended periods of time.

Accessories:

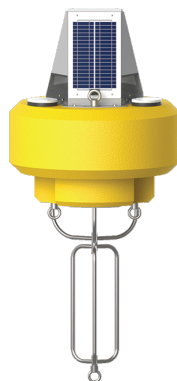
- **Battery Harness** with integrated solar regulator and 1, 2, or 3 ea. 28 AHR Battery
- **Geotech Data Logger** with Verizon 4G LTE cellular telemetry
- **Solar Marine Light** with 4 nautical mile range, 15 flashes per minute, yellow
- **Deployment Pipe** assembly with eye bolt and threaded male adapter, 4" schedule 80 pvc, 32" length
- **Sacrificial Zinc Anode**

Specifications:

| | Data Buoy 150 | Data Buoy 450 | Data Buoy 650 | Data Buoy 950 | Data Buoy 1250 |
|------------------------------------|---|---|---|---|---|
| Hull Dimensions | 24" (60.96 cm) O.D.; 14" (35.56 cm) tall | 34" (86.36 cm) O.D.; 20" (50.80 cm) tall | 38" (96.52 cm) O.D.; 22" (55.88 cm) tall | 42" (106.70 cm) O.D.; 26" (66.04 cm) tall | 48" (121.92 cm) O.D.; 28" (71.12 cm) tall |
| Tower Dimensions | 13" (33.02 cm) tall, triangular | 20" (50.80 cm) tall, triangular | 40" (101.60 cm) tall, 7/8" tubular | 45" (114.30 cm) tall, 7/8" tubular | 50" (127.00 cm) tall, 7/8" tubular |
| Center Data Well Dimensions | 10.3" (26.16 cm) I.D.; 13.5" (34.29 cm) deep | 10.3" (26.16 cm) I.D.; 19.5" (49.53 cm) deep | 10.3" (26.16 cm) I.D.; 21.5" (54.61 cm) deep | 10.3" (26.16 cm) I.D.; 25.5" (64.77 cm) deep | 10.3" (26.16 cm) I.D.; 27.5" (69.85 cm) deep |
| Weight | 95 lbs. (43.09 kg) | 145 lbs. (65.77 kg) | 215 lbs. (97.52 kg) | 285 lbs. (129.27 kg) | 300 lbs. (136.08 kg) |
| Buoyancy | 150 lbs. (68.04 kg) | 450 lbs. (204.12 kg) | 650 lbs. (294.84 kg) | 950 lbs. (430.91 kg) | 1250 lbs. (566.99 kg) |
| Solar Power | (3) 8-watt 12VDC solar panels | (3) 13-watt 12VDC solar panels | (3) 30-watt 12VDC solar panels | (3) 44-watt 12VDC solar panels | (3) 57-watt 12VDC solar panels |
| Hull Material | Cross-linked polyethylene foam with polyurea coating & stainless steel deck | | | | |
| Hardware Material | 316 stainless steel | | | | |
| Mooring Attachments | 1 or 2 point, 3/4" eyenut | | | | |
| Pass-Through Ports | 8 sealing ports for power and sensor interface | | | | |



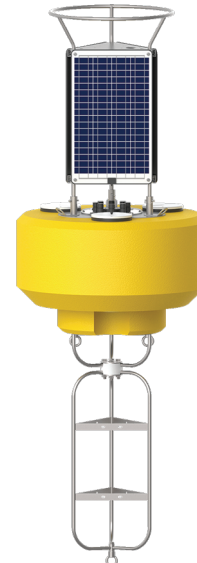
Data Buoy 150



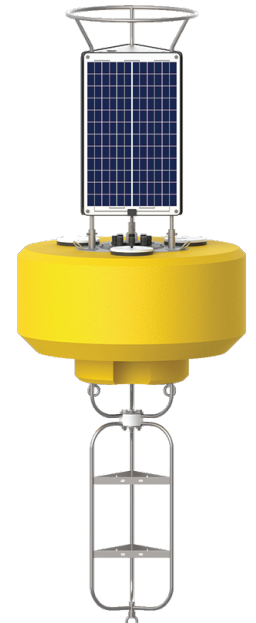
Data Buoy 450



Data Buoy 650



Data Buoy 950



Data Buoy 1250

CALL GEOTECH TODAY (800) 833-7958

Geotech Environmental Equipment, Inc.

2650 East 40th Avenue • Denver, Colorado 80205

(303) 320-4764 • FAX (303) 322-7242

email: sales@geotechenv.com • website: www.geotechenv.com