

By utilizing Ayyeka's state-of-the-art Industrial IoT technology, remote monitoring operations can benefit from greater efficiency, reduced system breakdowns and better regulatory adherence. With robust software integrated into the devices' systems, continuous monitoring provides powerful situational awareness that helps to ensure smooth operation and reduced site visits. It offers ruggedized IP68, NEMA6p hardware, and a powerful feature-rich AI-driven software platform that integrates with almost any 3rd party industrial data management platform.

#### FEATURES

- High compatibility - attach any sensor to any software system
- Efficient plug-and-play installation connects to new and existing infrastructure saving time and money
- High level security with encryption, authentication and remote updates
- Comprehensive with all required equipment and services
- Solar or AC Power Options



**Wavelet 4R**  
Ultimate Scalability



**Wavelet V2**  
Ultimate Versatility



**Wavelet Ex V2**  
Explosive Environment



**CALL GEOTECH TODAY (800) 833-7958**

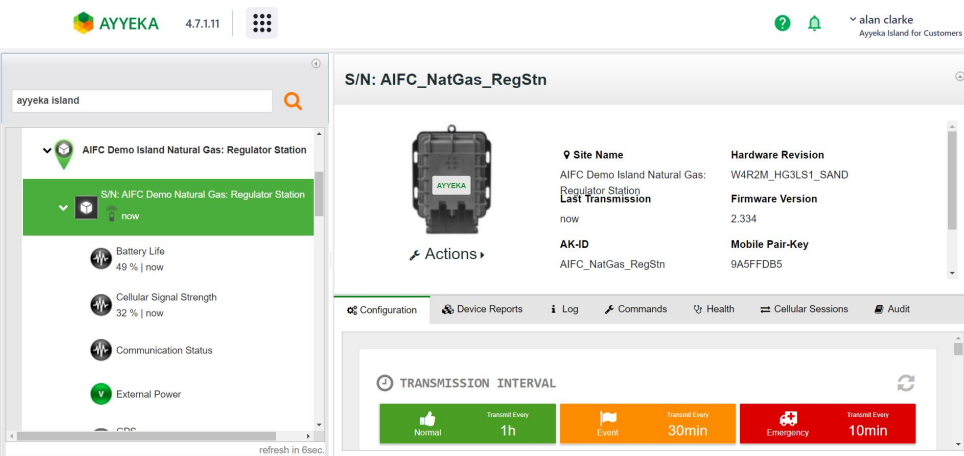
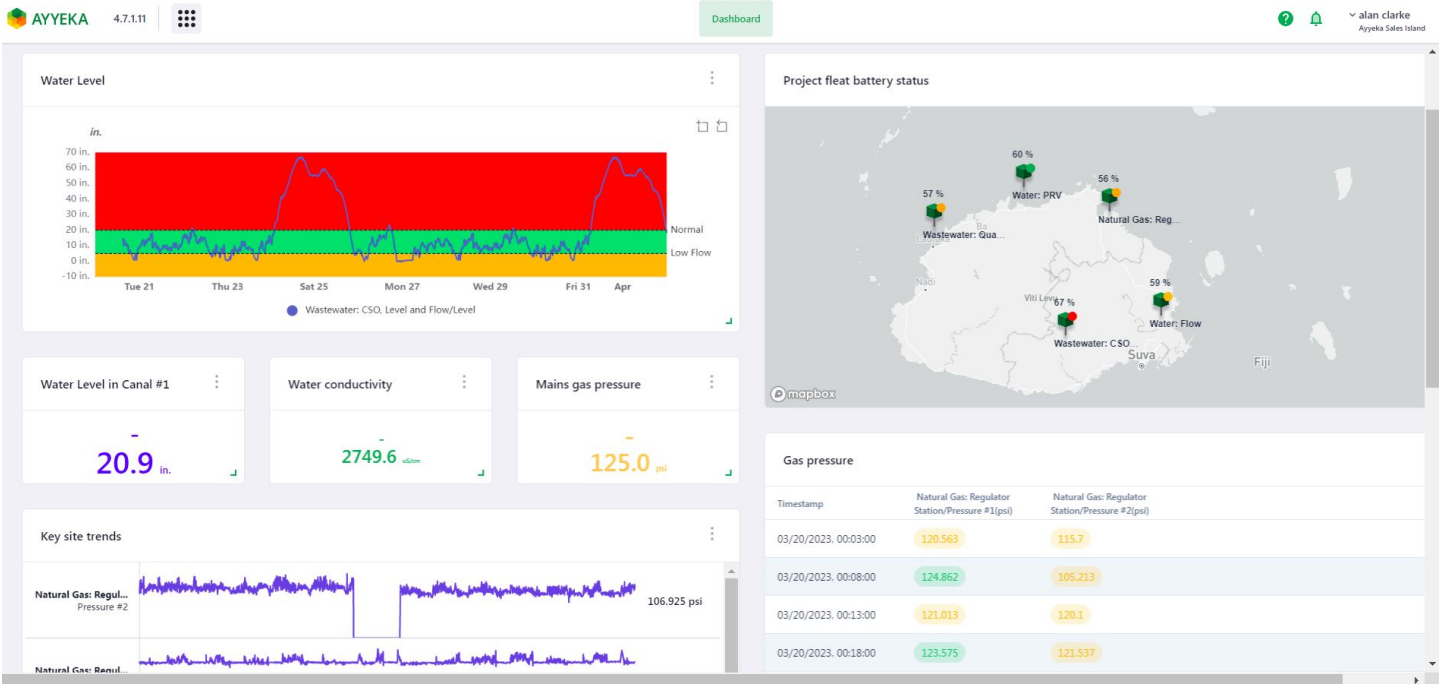
**Geotech Environmental Equipment, Inc.**

2650 East 40th Avenue • Denver, Colorado 80205

(303) 320-4764 • (800) 833-7958 • FAX (303) 322-7242

email: sales@geotechenv.com website: www.geotechenv.com

### Field Asset Intelligence Platform (FAI) Managing Remote Data & Devices



- Monitor all devices using a powerful mapping technology that transforms data into meaningful visual insights.
- Intuitive UI providing full control over real time alerts via SMS, email, or phone call, allowing for quicker response for troubleshooting and secures project assets.
- Instant access to remote assets, creating a connected infrastructure with unparalleled ease.
- Support for standard protocols ensures reliable integration in existing systems such as SCADA or business intelligence solutions.
- On-demand oversight over devices ensuring their configurations are up to date and firmware remains current.

**CALL GEOTECH TODAY**  
**(800) 833-7958**

**Geotech Environmental Equipment, Inc.**  
2650 East 40th Avenue • Denver, Colorado 80205  
(303) 320-4764 • FAX (303) 322-7242  
email: sales@geotechenv.com • website: www.geotechenv.com

	Wavelet 4R	Wavelet V2	Wavelet Ex V2	
Data & Software	Data Hosting	Cloud or on-premises	Cloud or on-premises	
	Cyber-security	TLS 1.3 Protocol (AES-256)	TLS 1.3 Protocol (AES-256)	TLS 1.3 Protocol (AES-256)
	Software Integration	REST API, CSV	REST API, CSV	REST API, CSV
	SCADA Integration	CSV, DNP3, OPC-UA	CSV, DNP3, OPC-UA	CSV, DNP3, OPC-UA
	IoT Platform Software	Web-base from Wifi Enabled Device	Web-base from Wifi Enabled Device	Web-base from Wifi Enabled Device
	AyyekaGo Mobile App	iOS, Android	iOS, Android	iOS, Android
	Data Export Options	CSV, FTP	CSV, FTP	CSV, FTP
	Device Memory	16 MB	8 GB	8 GB
	Data Communication	Bidirectional	Bidirectional	Bidirectional
	Alert Notification	Up to 4 per Data Stream	Up to 4 per Data Stream	Up to 4 per Data Stream
	System Health Check	Included	Included	Included
	Power	Primary Power Supply	Internal Lithium Battery (Field replaceable and non-rechargeable), 3.9 V DC 3A	Internal Lithium Battery (Field replaceable and non-rechargeable), 3.9 V DC 3A
Internal Battery Capacity		32 Ah	32 Ah	32 Ah
Battery Life		Up to 10 years (usage dependent)	Up to 10 years (usage dependent)	Up to 5+ years
Battery Life Notifications		Included	Included	Included
External Power		6-24VDC automatic power source switching	6-24VDC automatic power source switching	6-12VDC automatic power source switching
Sensor Inputs	Sensor Connection	Wired with M12 Connectors	Wired with M12 Connectors	Wired with M12 Connectors
	Serial Interfaces	RS485 or RS232 or SDI-12	RS485 or RS232 or SDI-12	RS485 or RS232 or SDI-12
	Serial Protocols	Modus, SDI-12, ASCII Text, Custom	Modus, SDI-12, ASCII Text, Custom	Modus, SDI-12, ASCII Text, Custom
	Serial Inputs	16	16	16
	Analog Inputs	2(4-20 mA, 0-24 V)	4(4-20 mA, 0-24 V)	3(4-20 mA, 0-24 V)
	Digital Inputs	2 dry contact, open drain Pulse counting: up to 2 at 39Hz max pulse frequency	5 dry contact, open drain Pulse counting: up to 2 at 39Hz max pulse frequency	3 dry contact, open drain Pulse counting: up to 2 at 39Hz max pulse frequency
	Digital Outputs	2 at 0V/2.8V	5 at 0V/2.8V, Up to 3 simultaneously	3 at 0V/2.8V
	Sensor Power Supply Output	200mA, 12V or 2.8V	200mA, 12V or 3.6V	12V, 350mA
	Sensor Ports	1 Port; Supports up to 4 sensors using cable splitters	3 Ports; Supports up to 12 sensors using cable splitters	3 Ports; Each accepts serial, analog, and digital inputs
Connectivity	Cellular/IoT Communication	WA4000-31 (US) - CAT-M WA4000-82 (Global) - C AT-M, NB-IoT, 2G WA4000-61-E (Global) -4G, 3G, 2G	4G/3G/2G	4G/3G/2G
	SIM Card	Single SIM slot, 4FF	Dual SIM slots, 3FF	Dual SIM slots, 3FF
	Cellular Roaming	Global multi-network SIM(s), data plan included for up to 180+ countries	Global multi-network SIM(s), data plan included for up to 180+ countries	Global multi-network SIM(s), data plan included for up to 180+ countries
	Configuration and upgrades	Bluetooth Low Energy (BLE), remotely (over-the-air), USB connection	Bluetooth Low Energy (BLE), remotely (over-the-air), USB connection	Bluetooth Low Energy (BLE), remotely (over-the-air), USB connection
	Data Transmission	Periodic, data-dependant	Periodic, data-dependant	Periodic, data-dependant
	Antenna	External antenna	External & Backup antenna	External antenna
Mechanical Enclosure	Built-in GPS	n/a	Included	Included
	Dimensions (W x H x D)	13.2 cm x 16.5cm x 7.3cm (5.2 in x 6.5 in x 2.9 in)	13.2 cm x 16.5cm x 7.3cm (5.2 in x 6.5 in x 2.9 in)	13.2 cm x 16.5cm x 7.3cm (5.2 in x 6.5 in x 2.9 in)
	Weight	0.7kg (1.5 lbs)	0.7kg (1.5 lbs)	1.0 kg (2.2 lbs)
	Enclosure Material	Polycarbonate w/ ABS (UL 94V-0 and UV-Resistant)	Polycarbonate w/ ABS (UL 94V-0 and UV-Resistant)	Polycarbonate w/ ABS (UL 94V-0 and UV-Resistant)
	Ingress Protection	IP 68/NEMA 6P	IP 68/NEMA 6P	IP 68/NEMA 6P

	Wavelet 4R	Wavelet V2	Wavelet Ex V2	
Cybersecurity	<b>Operating Temperature</b>	-40° to - 80°C (-40° to 176°F)	-40° to - 80°C (-40° to 176°F)	-40° to 68°C (-40° to 154°F)
	<b>Storage Temperature</b>	-40° to 80°C (-40° to 176°F)	-40° to 80°C (-40° to 176°F)	-40° to 80°C (-40° to 176°F)
	<b>Data in Transit Security</b>	TLS 1.3	TLS 1.3	TLS 1.3
	<b>Device Authentication</b>	Hardware Based	Hardware Based	Hardware Based
	<b>Bluetooth</b>	ECC key exchange, AES-256 encryption	ECC key exchange, AES-256 encryption	ECC key exchange, AES-256 encryption
	<b>Firmware/ Security Updates</b>	Full-over-the-air (FOTA)	Full-over-the-air (FOTA)	Full-over-the-air (FOTA)
	<b>Physical Access</b>	Restricted to diagnostics only	Restricted to diagnostics only	
Certification	<b>Safety</b>	EN 61010-1 2010 IEC 61010-1	EN 61010-1 2010 IEC 61010-1	EN 61010-1 2010 IEC 61010-1
	<b>FCC</b>	FCC Part 15 Subpart B	FCC Part 15 Subpart B	FCC Part 15 Subpart B
	<b>EMC</b>	EN 301 489-1 V2.1.1 2017 EN 301 489-7 V1.3.1 2005	EN 301 489-1 V2.1.1 2017 EN 301 489-7 V1.3.1 2005	EN 301 489-1 V2.1.1 2017 EN 301 489-7 V1.3.1 2005
	<b>Spurious Emissions</b>	EN 301 511 V12.5.1 2017	EN 301 511 V12.5.1 2017	EN 301 511 V12.5.1 2017
	<b>Radiate Emissions</b>	EN 301 908-1 V11.1.1 2016	EN 301 908-1 V11.1.1 2016	EN 301 908-1 V11.1.1 2016
	<b>IP68/NEMA6P</b>	EN 60529:1992+A2:2013 EIC 60529:1989/AM1:1999	EN 60529:1992+A2:2013 EIC 60529:1989/AM1:1999	EN 60529:1992+A2:2013 EIC 60529:1989/AM1:1999
	<b>CE</b>	Approved	Approved	Approved

## Data Plan Options

Geotech Data Services - Up to 32 Parameters Per Data Transmission

	Basic	Standard	Professional
<b>Transmission Frequency</b>	4 Hours	1 Hour	1 minute
<b>Max Sampling Frequency (per hour)</b>	120	180	500
<b>Multi-carrier Cellular Data Plan</b>	Yes	Yes	Yes
<b>Users</b>	Unlimited	Unlimited	Unlimited
<b>Mobile App for Device Configuration</b>	Yes	Yes	Yes
<b>Data Retention</b>	1 Years	2 Years	3 Years
<b>Free Hibernation Mode</b>		Yes	Yes
<b>Rel-time mode</b>			Yes

**CALL GEOTECH TODAY**

**(800) 833-7958**

**Geotech Environmental Equipment, Inc.**

2650 East 40th Avenue • Denver, Colorado 80205

(303) 320-4764 • FAX (303) 322-7242

email: sales@geotechenv.com • website: www.geotechenv.com