

Geotech Soil Sampling Kits

Geotech hand auger kits are ideal for collecting disturbed or undisturbed soil samples near the surface. The rugged stainless steel construction cuts through compact, stony, or gravelly surfaces with ease. Made with exceptional workmanship and materials, the Geotech auger kits are designed for long lasting durability.

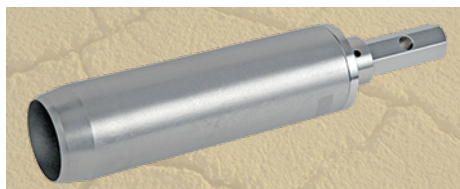
FEATURES

- Hardened steel core sampler
- Tool-free quick connect components
- Durable chrome-moly steel extensions
- Threaded core for easy sleeve extraction
- Available adapters to convert threaded samplers to Geotech Quick Connect System

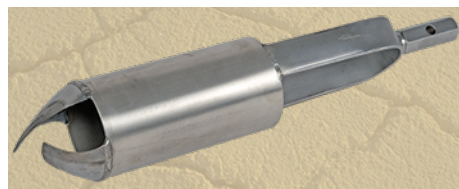


AVAILABLE SOIL SAMPLING KITS

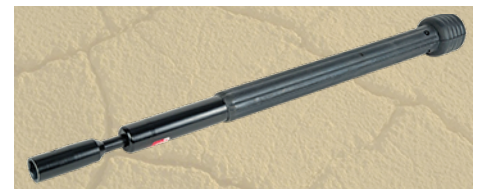
2" Core Sampler, 3' Ext Kit (81451000)	2.5" Core Sampler, 3' Ext Kit (81451001)	2" Core Sampler, 4' Ext Kit (81451002)	2.5" Core Sampler, 4' Ext Kit (81451003)
2" Core Sampler	2.5" Core Sampler	2" Core Sampler	2.5" Core Sampler
3.25" Regular Auger	4" Regular Auger	3.25" Regular Auger	4" Regular Auger
Slide Hammer	Slide Hammer	Slide Hammer	Slide Hammer
18" Cross Handle	18" Cross Handle	18" Cross Handle	18" Cross Handle
2 ea. 3' Extensions	2 ea. 3' Extensions	2 ea. 4' Extensions	2 ea. 4' Extensions
4 ea. Quick-Connect Pins	4 ea. Quick-Connect Pins	4 ea. Quick-Connect Pins	4 ea. Quick-Connect Pins
Canvas Case	Canvas Case	Canvas Case	Canvas Case
Slip Wrench	Slip Wrench	Slip Wrench	Slip Wrench



2" Core Sampler



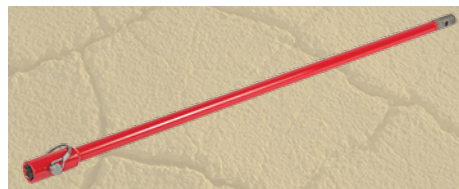
3.25" Regular Auger



Slide Hammer



18" Cross Handle



3' Extension



Slip Wrench

CALL GEOTECH TODAY (800) 833-7958

Geotech Environmental Equipment, Inc.

2650 East 40th Avenue • Denver, Colorado 80205

(303) 320-4764 • FAX (303) 322-7242

email: sales@geotechenv.com • website: www.geotechenv.com

OPTIONAL & INTERCHANGEABLE ACCESSORIES

All parts are interchangeable for customizing the tool by adding parts as needed.

Accessory	Sizes (Part Numbers)		
• Regular Auger	3.25" (21451005)	4" (21451008)	
• Sand Auger	3.5" (21451006)	4" (21451009)	
• Mud Auger	3.5" (21451007)	4" (21451010)	
• Core Sampler (cup & cap)	2" x 6" (21451012)	2.5" x 6" (21451013)	
• Split Core Sampler (cup & cap)	2" x 6" (21451021)	2.5" x 6" (21451020)	
• Extensions	3' (21451001)	4' (21451002)	5' (51451003)
• Cross Handle	18" (21451000)		
• Hard Carry Case	3' (21451016)	4' (1451017)	
• Canvas Case	3' (21451018)	4' (21451019)	
• Plastic Soil Cylinder	2" x 6" (71450032)		
• Sleeve Caps	2" (11450025)		
• Snap Pin	(21451011)		
• Adapter Male Hex	(21451014)		
• Adapter Female Hex	(21451015)		



Convert 5/8" threaded samplers to Geotech Quick-Connect System



Cylinders, Caps and Sample Supplies

CALL GEOTECH TODAY (800) 833-7958

Geotech Environmental Equipment, Inc.

2650 East 40th Avenue • Denver, Colorado 80205

(303) 320-4764 • FAX (303) 322-7242

email: sales@geotechenv.com • website: www.geotechenv.com