

# SS GEOSUB PUMP & CONTROLLER INSTRUCTIONS & MAINTENANCE

## BASIC OPERATION

- Plug power cord into controller.
- Plug power cord into AC supply outlet.
- Wait for initialization sequence to complete.
- From main menu:

```
RT=START  #nn
U=SETUP   0=WELL
```

- Press to start the pump at default settings.

```
STARTING  #nn
PLEASE WAIT
```

- Wait for pump to finish.

```
PUMPING WELL #nn
nnn DR ON    nn
```

- Press or to adjust pump speed to achieve desired flow rate.

or

```
PUMPING WELL #nn
nnn DR ON    nn
```

- Pump water at desired pump speed.
- Press to stop pump and return to main menu.

## SETTING DRY RUN

**NOTE:** Set point must be above 100 for Dry Run protection to be activated.

- Press to toggle Dry Run ON and OFF.

**NOTE:** Loading Well #0 will load default start up configuration.

**FOR MAINTENANCE AND SERVICE PLEASE CALL GEOTECH DIRECTLY AT 1-800-833-7958**

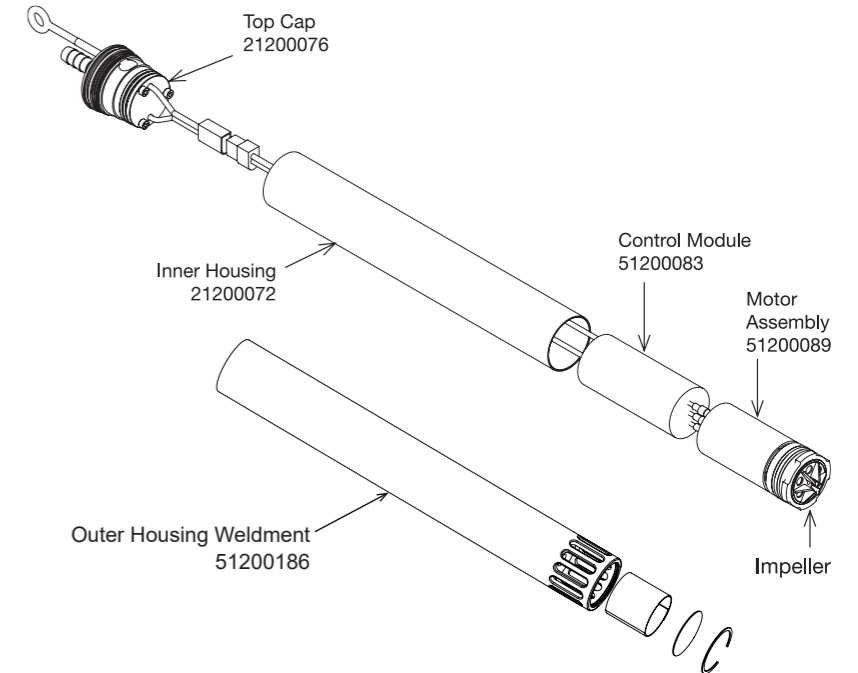
## DIS-ASSEMBLY AND CLEANING

- Disconnect pump cable from controller.
- Unscrew outer housing (No tools needed).
- Remove inner housing by pulling apart, slightly twisting while pulling may help.
- The control module may become disconnected from the motor lead while pulling apart, this is normal.
- Remove motor assembly from inner housing by pulling apart, slightly twisting while pulling may help.
- Inspect motor assembly, impeller, and control module for damage or wear.
- Inspect internal wires for cuts or breaks, making sure wires have insulation covering them.
- Inspect all O-rings for nicks, cuts, brittleness.
- Decontaminate outer and inner housing.
- Decontaminate the motor assembly and control module.
- Decontaminate top cap and hose barb.
- Clean all threads thoroughly to make sure nothing will bind them.
- Insert motor assembly back into inner housing, **be careful not to damage O-rings.**
- Connect control module wires back onto motor lead.



**Note:** A very small amount of inert grease or water may be used to help lubricate O-ring seals.

- Twist the motor assembly and inner housing assembly 180 degrees, coiling the wires to create more room.
- Push the inner housing over the cap, **be careful not to damage O-rings.**
- Install the outer housing **making sure the threads to not bind.**



## PARTS

## PART #

- |  |          |
|--|----------|
| 1. SS GEOSUB CONTROLLER 300 W 120 V..... | 81200034 |
| 2. SS GEOSUB CONTROLLER 300 W 230 V..... | 81200035 |
| 3. MANUAL.....                           | 11200813 |
| 4. SS GEOSUB CONNECTOR KIT.....          | 51200092 |
| 5. O-RING KIT.....                       | 51200088 |
| 6. CHECK VALVE (OPTION).....             | 81200033 |