

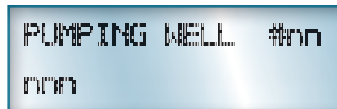


Geotech Environmental Equipment, Inc.
2650 East 40th Avenue Denver, Colorado 80205
1-800-833-7958 website: www.geotechenv.com

GEOSUB 2 PUMP & CONTROLLER INSTRUCTIONS & MAINTENANCE

BASIC OPERATION

- Plug power cord into controller.
- Plug power cord into AC supply outlet.
- Wait for initialization sequence to complete.
- From main menu:
- Press to start the pump at default settings.
- Wait for pump to finish.
- Press or to adjust pump speed to achieve desired flow rate.
- Pump water at desired pump speed.
- Press to stop pump and return to main menu.

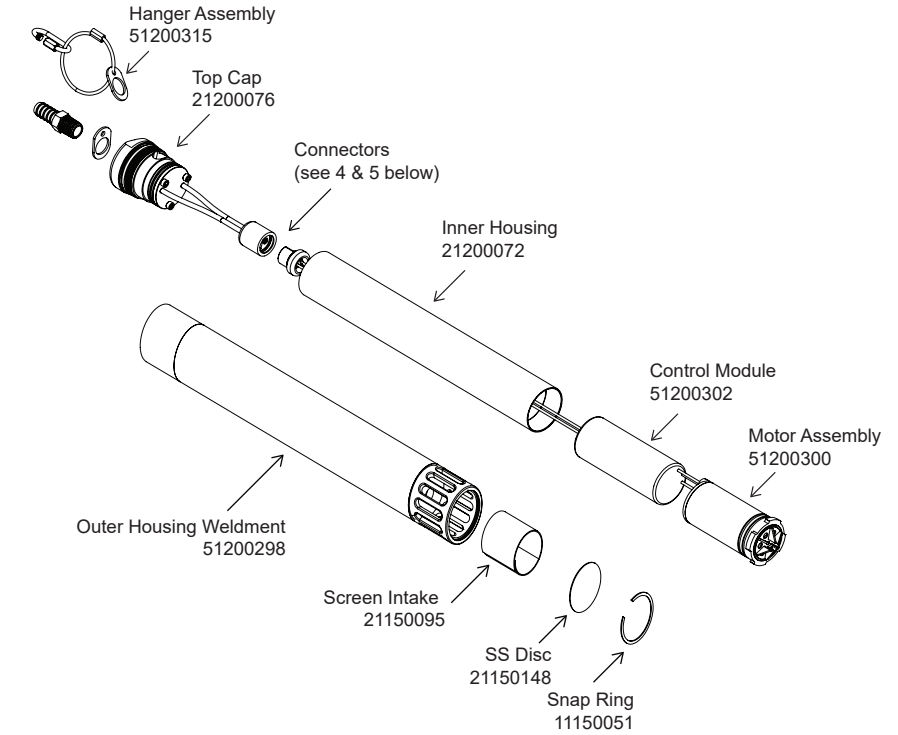


DISASSEMBLY AND CLEANING

1. Disconnect pump cable from controller.
 2. Unscrew outer housing (No tools needed).
 3. Remove inner housing by pulling apart. Slightly twisting while pulling may help.
 4. Disconnect the connector.
 5. Remove motor assembly from inner housing by pulling apart, slightly twisting while pulling may help.
 6. Inspect motor assembly, impeller, and control module for damage or wear.
 7. Inspect internal wires for cuts or breaks, making sure wires have insulation covering them.
 8. Inspect all O-rings for nicks, cuts, brittleness.
 9. Decontaminate outer and inner housing.
 10. Decontaminate the motor assembly and control module.
 11. Decontaminate top cap and hose barb.
 12. Clean all threads thoroughly to make sure nothing will bind them.
 13. Insert motor assembly back into inner housing, **be careful not to damage O-rings.**
 14. Connect control module wires back onto motor lead.
- Note:** A very small amount of deionized water may be used to help lubricate O-ring seals.
15. Twist the motor assembly and inner housing assembly 180 degrees counter-clockwise, coiling the wires to create more room.
 16. Push the inner housing over the cap, **be careful not to damage O-rings.**
 17. Install the outer housing **making sure the threads do not bind.**



REPLACEMENT PARTS



REPLACEMENT PARTS (not shown)	PART #
1. GEOSUB 2 CONTROLLER 300 W 120 V.....	81200034
2. GEOSUB 2 CONTROLLER 300 W 230 V.....	81200035
3. MANUAL.....	21200302
4. FEMALE CONNECTOR KIT FOR CABLE.....	51200307
5. MALE CONNECTOR KIT FOR MOTOR.....	51200308
6. O-RING KIT.....	51200306
7. CHECK VALVE (OPTION).....	81200033
8. TAPE GUIDE.....	22050255
9. DROP TUBE.....	51200299
10. DROP TUBE INTAKE.....	51150078

FOR MAINTENANCE AND SERVICE PLEASE CALL GEOTECH DIRECTLY AT 1-800-833-7958